

SMOKE ALARM USER'S GUIDE MODEL 19040CA • 9 Volt Battery Operated Smoke Alarm

1. RECOMMENDED LOCATIONS

- Locate the first alarm in the immediate area of the sleeping rooms. Try to monitor the exit path as the sleeping rooms are usually farthest from the exit... Locate additional alarms to monitor any stairway as stairways act like chimneys for smoke and heat... Locate at least one alarm on every floor level... Locate an alarm in every sleeping room... Locate an alarm in every room where electrical appliances are operated... Locate an alarm in every room where someone sleeps with the door closed... Smoke, heat, and combustion products rise to the ceiling and spread horizontally... When mounting an alarm on the ceiling, locate it at a minimum of 10cm (4") from the side wall.



IMAGE 1A SINGLE FLOOR PLAN

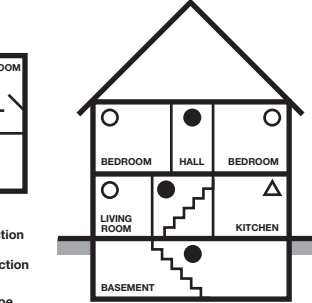


IMAGE 1B MULTIPLE FLOOR PLAN

- In homes that are not well insulated, extreme heat or cold can be transferred from the outside to the inside through poorly insulated walls and roof... Install Smoke Alarms on tray-shaped ceilings (coffered ceilings) on the highest portion of the ceiling... For mobile home installation, select locations carefully to avoid thermal barriers that may form at the ceiling.

MOBILE HOME INSTALLATION

Modern mobile homes have been designed to be energy efficient. Install smoke alarms as recommended in RECOMMENDED LOCATIONS and Images 1A & 1B. In older mobile homes that are not well insulated compared to present standards, extreme heat or cold can be transferred from the outside to the inside through poorly insulated walls and roof... If you are not sure about the insulation in your mobile home, or if you notice that the outer walls and ceiling are either hot or cold, install the alarm on an inside wall.

WARNING: TEST YOUR SMOKE ALARM OPERATION AFTER MOBILE HOME HAS BEEN IN STORAGE, BEFORE EACH TRIP AND AT LEAST ONCE A WEEK DURING USE.

2. LOCATIONS TO AVOID

- Do not install within 0.9 m (3') of the following: The door to a kitchen, or a bathroom that contains a tub or shower, forced air supply ducts used for heating or cooling, ceiling or whole house ventilating fans, or other high air-flow areas... Do not place the alarm where drapes or other objects will block the sensor... Do not install in peaks of vaulted ceilings... Install at least 30.5 cm (12") away from fluorescent lights... Keep out of insect infested areas... Extreme temperatures may effect the sensitivity of the alarm... Do not install in areas where the relative humidity (RH) is greater than 85%... Avoid placing ionization smoke alarms in kitchen areas.

IMAGE 2A

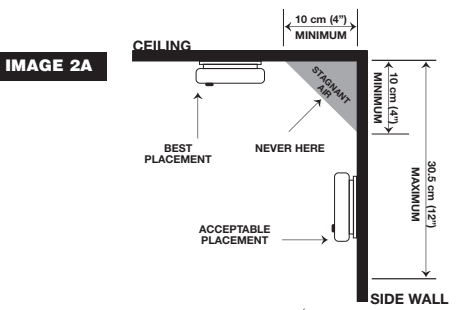


IMAGE 2B

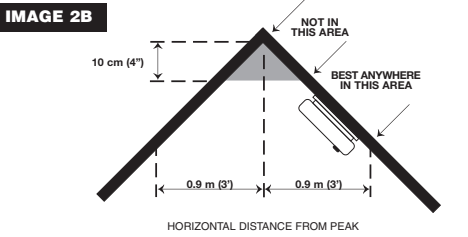


IMAGE 2C

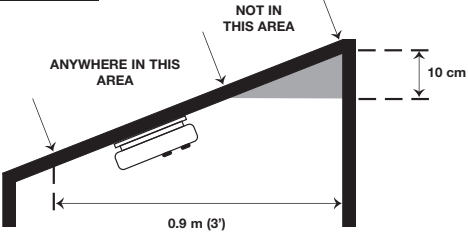


IMAGE 2D

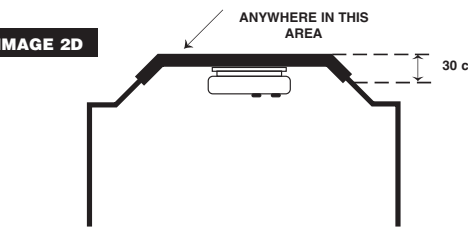


IMAGE 2E

- Smoke alarms are not to be used with detector guards unless the combination (alarm and guard) has been evaluated and found suitable for that purpose... Do not place in the garage. Particles of combustion are present when you start your automobile.

3. INSTALLATION INSTRUCTIONS

CAUTION: THIS UNIT IS SEALED. THE COVER IS NOT REMOVABLE!

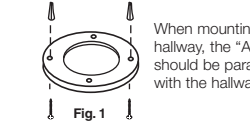


Fig. 1

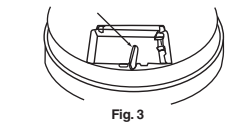


Fig. 3

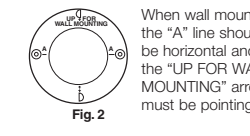


Fig. 2

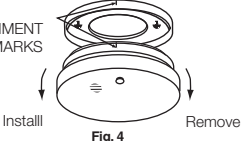


Fig. 4

- Remove the mounting plate from the back of the alarm... 2. To ensure aesthetic alignment of the alarm with the hallway or wall... 3. After selecting the proper smoke alarm location as described in Section 1... 4. Battery installation instructions are provided on the inside of the battery compartment... 5. When installing the battery, press the battery reminder tab down into the battery compartment... 6. Alignment marks are provided on the edge of the trim plate... 7. After installation, test your alarm by depressing and holding down the test button for at least 5 seconds.

CAUTION: DUE TO THE LOUDNESS (85 DECIBELS) OF THE ALARM, ALWAYS STAND AN ARMS-LENGTH AWAY FROM THE UNIT WHEN TESTING.

4. OPERATION AND TESTING

The smoke alarm is operating once a fresh battery is installed and testing is complete. OPERATION: When products of combustion are sensed, the unit sounds a loud 85db pulsating alarm... FLASHING LED LIGHT: This smoke alarm is equipped with a flashing red indicator light... TESTING: Test by pushing the test button on the cover... NOTE: WEEKLY TESTING IS REQUIRED.

5. FALSE ALARMS

Smoke alarms are designed to minimize nuisance alarms. Cigarette smoke will not normally set off the alarm... Smoke alarms are devices that can provide early warning of possible fires at a reasonable cost... If the alarm does alarm, check for fires first.

6. MAINTENANCE

BATTERY REPLACEMENT

Note: Replacement batteries are available where you purchased your alarm. To replace the battery, remove the alarm from the mounting plate... The Model 0914CA Smoke Alarm is powered by a 9V carbon zinc battery (alkaline and lithium batteries may also be used)...

Carbon Zinc Type: EVEREADY 1222; GOLD PEAK 1604P, 1604S; Alkaline Type: ENERGIZER 522; DURACELL MN1604, MN1604; GOLD PEAK 1604A; PANASONIC 6AM6, 6AM-6, 6AM-6PI, 6AM6X, AND 6LR61 (GA); Lithium Type: ULTRALIFE U9VL-J; NOTE: WEEKLY TESTING IS REQUIRED. WARNING! USE ONLY THE BATTERIES SPECIFIED. USE OF DIFFERENT BATTERIES MAY HAVE A DETRIMENTAL EFFECT ON THE UNIT. CLEANING YOUR ALARM: NOTE: Clean the alarm at least once a year, for proper operation.

7. LIMITATIONS OF SMOKE ALARMS

WARNING: PLEASE READ CAREFULLY AND THOROUGHLY.

- NFPA 72 states: Fire-warning equipment for residential occupancies are capable of protecting about half of the occupants... Smoke alarms are devices that can provide early warning of possible fires at a reasonable cost... A battery powered alarm must have a battery of the specified type... A.C. powered alarms (without battery backup) will not operate if the A.C. power has been cut off... Smoke alarms should be tested regularly... Smoke alarms cannot provide an alarm if smoke does not reach the alarm... If the alarm is located outside the sleeping room or on a different floor, it may not wake up a sound sleeper.

There are situations where a smoke alarm may not be effective to protect against fire as noted by the NFPA and UL. For instance:

- a) smoking in bed
b) leaving children home alone
c) cleaning with flammable liquids, such as gasoline
d) fires where the victim is intimate with a flaming initiated fire
e) fires where the smoke is prevented from reaching the detector due to a closed door or other obstruction
f) incendiary fires where the fire grows so rapidly that an occupant's egress is blocked even with properly located detectors

9. NRC INFORMATION

Ionization type smoke alarms use a very small amount of a radioactive element in the sensing chamber to enable detection of visible and invisible combustion products. The radioactive element is safely contained in the chamber and requires no adjustments or maintenance.

10. NFPA REQUIRED PROTECTION

- The National Fire Protection Association's Standard 72 provides the following information: Smoke Detection, Where required by applicable laws, codes, or standards for a specific type of occupancy... (1) In all sleeping rooms and guest rooms... (2) Outside of each separate dwelling unit sleeping area... (3) On every level of a dwelling unit, including basements... (4) On every level of a residential board and care occupancy... (5) In the living area(s) of a guest suite... (6) In the living area(s) of a residential board and care occupancy... Also, Fire Sentry makes no warranty, express or implied, written or oral...

Smoke Detection - Are More Smoke Alarms Desirable?

Required number of smoke alarms (as shown in Image 1A and Image 1B): The required number of smoke alarms might not provide reliable early warning protection for those areas separated by a door from the areas protected by the required smoke alarms... The additional areas include the basement, bedrooms, dining room, furnace room, utility room, and hallways not protected by the required smoke alarms.

11. SERVICE AND WARRANTY

If after reviewing this manual you feel that your smoke alarm is defective in any way, do not tamper with the unit. In many cases, the quickest way to exchange your alarm is to return it to the original place of purchase.

ONE YEAR LIMITED WARRANTY

Fire Sentry warrants to the original purchaser that this enclosed smoke alarm (but not the battery) will be free from defects in material and workmanship or design under normal use and service for a period of one year from the date of purchase.

This warranty shall not apply to this smoke alarm if it has been damaged, modified, abused or altered after the date of purchase or if it fails to operate due to improper maintenance or inadequate AC or DC electrical power.

The liability of Fire Sentry or any of its parent or subsidiary corporations arising from the sale of this smoke alarm and under the terms of this limited warranty shall not in any case exceed the cost of replacement of this smoke alarm and, in no case shall Fire Sentry or any of its parent or subsidiary corporations be liable for consequential loss or damages resulting from the failure of this smoke alarm or for breach of this or any other warranty, express or implied.